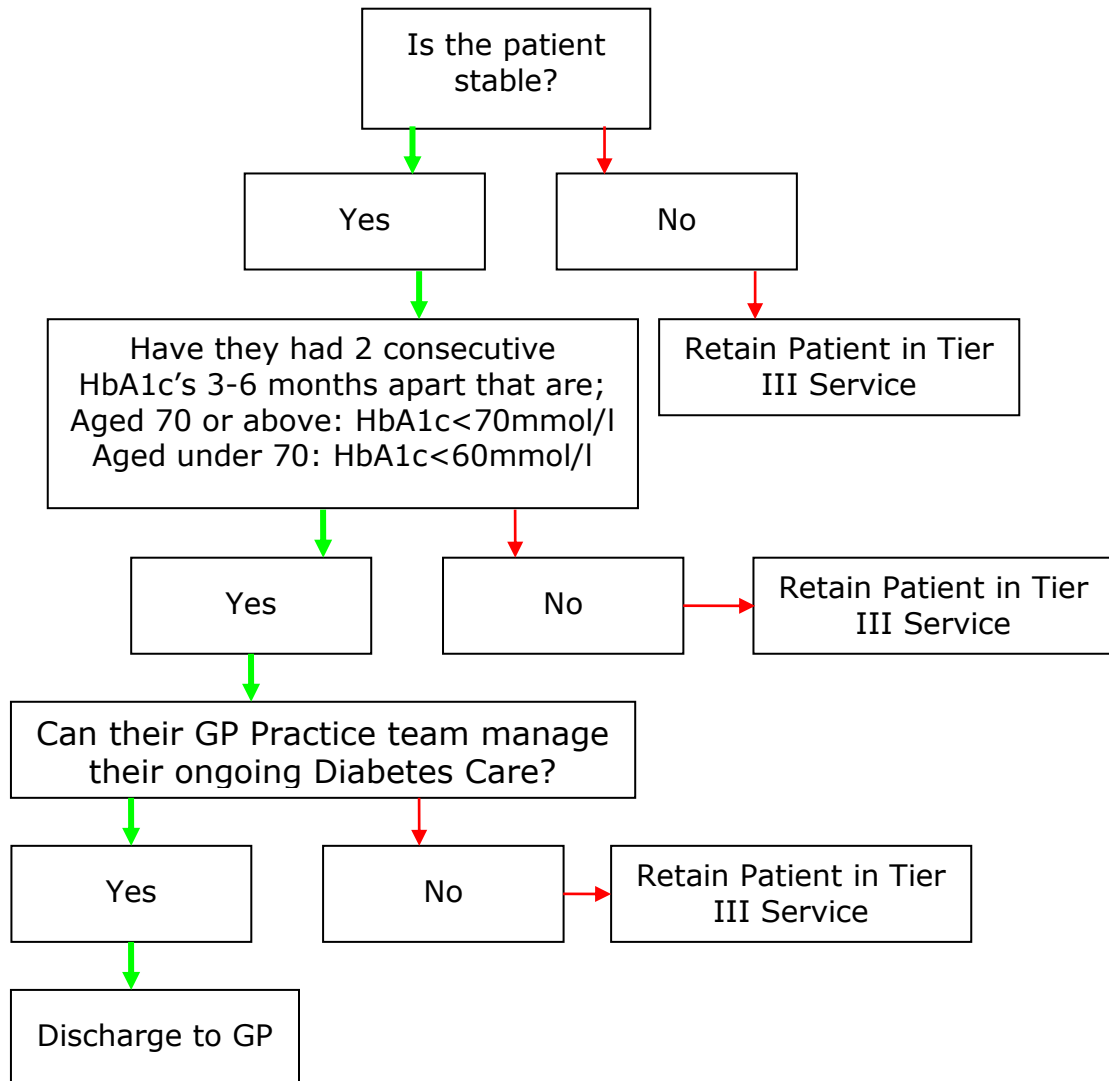


## Tier III Diabetes Clinic Discharge & Review Guidelines



Condition	Management / Discharge Guideline
Well controlled (Aged <70yrs: HbA1c < 60mmol/l or 70mmol/l if aged >70yrs) with no or minimal diabetes complications	Discharge to GP if competent in managing ongoing diabetes care as per guidance sheet. Allow re-referral back in as necessary at GP discretion.
Well controlled as defined above but with one or more established diabetes complications of mild severity	Annual Clinic review with DSN, GPwSI and Dietician
Moderate control (HbA1c 75mmol/l) with one or more established diabetes complications of mild to moderate severity	Six Monthly review with DSN and annual review with GPwSI and Dietician
Poor control (HbA1c > 75mmol/l) or presence of moderate to severe diabetes complications	Three monthly review with DSN, six monthly review with GPwSI and Dietician
Very poor control (HbA1c > 86mmol/l) for > 18 months despite optimal management and advice	Refer to Tier IV service at KHT